

# V20

Fiber Microscope

- Handheld fiber microscope enables fiber face inspection
- Available in 200( $\mu\text{m}$ )x or 360( $\mu\text{m}$ )x magnification



V20

## Fiber Microscope

Test report  
S/W program to use with PC  
Pass/Fail Result  
Image magnification

V20

## Description

The Fiber Microscope is chiefly used in checking if the fiber end-face is clean. With the ability to display a clear image and the double amplification function, the V20 is able to analyze the cleanliness of the fiber end-face.



Passed



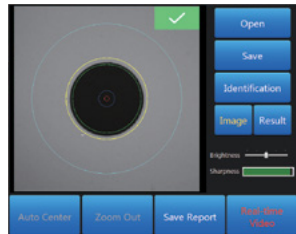
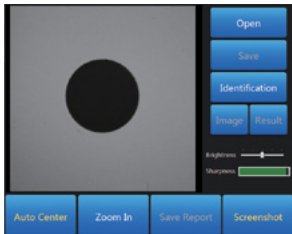
Failed

### Importance of a clean connector end interface

It is an essential to utilize auto-analysis software to test the connector and assess its quality during the commissioning and installation of the fiber. It is very important to save the verification records of the connector for future reference. End-to-end verification can be achieved by combining the connector test with the fiber verification. The following are displayed test images.

### Convenient test capability with PC software

Such software is installed on a PC, connected easily by a USB 2.0 interface. This makes the operation convenient. The results can be analyzed through the following procedure: connecting the optical fiber to the device, adjusting the sharpness and then tapping "screenshot".



### Patchcord Tip Adapters



2.5 mm ferrules / APC



2.5 mm ferrules / UPC



1.25 mm ferrules / APC



1.25 mm ferrules / UPC

### Technical Specifications

Resolution	3.2μm
Image sensor	640 x 480 (VGA)
Visual test	< 5μm
View angle	200μm*200μm of high magnification / 360μm*360μm of low magnification
Light source	Blue LED
luminance technique	Coaxial light source
Digital zoom	3 grades
Connector	USB 2.0
Operating / Storage temperature	-10°C to 50°C / -40°C to 70°C
Patchcord Tip Adapters	2.5mm (UPC, APC), 1.25mm (UPC, APC)

### Size and Weight



Height: 1.33 inches (34 mm)  
 Width: 5.9 inches (150 mm)  
 Depth: 1.37 inches (35 mm)  
 Weight: 0.37 pounds (168 grams)

The information on this catalog is subject to change without prior notice.

www.innoinstrument.com